

[click to enlarge](#)[click to enlarge](#)[Schematic](#) | [Chart](#) |
[Abbreviations & Terms](#)

Vintage

[Find this Yarn](#) UPDATED
5/7/12

A classic Aran cardigan knit in Vintage.



[PDF Pattern Instructions](#)

(If you can't open this PDF file you need Adobe Acrobat Reader. Get it [here](#).)

Shown in size Small

SIZES

Directions are for women's size X-Small. Changes for sizes Small, Medium, Large, X-Large **and XX-Large** are in parentheses.

FINISHED MEASUREMENTS

Bust (closed) - 34(38-42-46-50-54)"

Length - 21½(21½-22½-23-24-24½)"

Note: This garment was designed with a slightly oversized fit. Please take this into consideration when selecting your size

MATERIALS

8(9-10-11-12-12) Hanks **BERROCO VINTAGE** (100 grs), #5104 Mushroom

Straight knitting needles, sizes 5 (3.75 mm) and 8 (5.00 mm) OR SIZE TO OBTAIN GAUGE

Cable needle (cn)
4 St markers
Six 1" buttons

GAUGE

20 sts = 4"; 28 rows = 4" in Double Seed St on larger needles
TO SAVE TIME, TAKE TIME TO CHECK GAUGE

STITCH GLOSSARY

CB6

Sl 3 sts to cn and hold in BACK, k3, k3 from cn

CR4

Sl next st to cn and hold in BACK, k3, k1 from cn

CL4

Sl next 3 sts to cn and hold in FRONT, k1, k3 from cn

TR4

Sl next st to cn and hold in BACK, k3, p1 from cn

TL4

Sl next 3 sts to cn and hold in FRONT, p1, k3 from cn

CB7

Sl next 4 sts to cn and hold in BACK, k3, k4 from cn

Double Seed Stitch (Odd number of sts)

Row 1 (RS): K1, * p1, k1, rep from * across.

Rows 2 and 3: P1, * k1, p1, rep from * across.

Row 4: Rep Row 1.

Rep these 4 rows for Double Seed St.

PATTERN STITCH (Worked over 61 sts)

Row 1 (RS): P1, CB6, p2, CB6, p11, CR4, p1, CL4, p11, CB6, p2, CB6, p1.

Row 2 and all WS rows: K the k sts and p the p sts as they face you.

Row 3: P1, k6, p2, k6, p10, CR4, p1, k1, p1, CL4, p10, k6, p2, k6, p1.

Row 5: P1, k6, p2, k6, p9, CR4, p1, (k1, p1) twice, CL4, p9, k6, p2, k6, p1.

Row 7: P1, CB6, p2, CB6, p8, CR4, p1, (k1, p1) 3 times, CL4, p8, CB6, p2, CB6, p1.

Row 9: P1, k6, p2, k6, p7, CR4, p1, (k1, p1) 4 times, CL4, p7, k6, p2, k6, p1.

Row 11: P1, k6, p2, k6, p6, CR4, p1, (k1, p1) 5 times, CL4, p6, k6, p2, k6, p1.

Row 13: P1, CB6, p2, CB6, p5, CR4, p1, (k1, p1) 6 times, CL4, p5, CB6, p2, CB6, p1.

Row 15: P1, k6, p2, k6, p4, CR4, p1, (k1, p1) 7 times, CL4, p4, k6, p2, k6, p1.

Row 17: P1, k6, p2, k6, p3, CR4, p1, (k1, p1) 8 times, CL4, p3, k6, p2, k6, p1.

Row 19: P1, (CB6, p2) twice, CR4, p1, (k1, p1) 9 times, CL4, (p2, CB6) twice, p1.

Row 21: P1, k6, p2, k6, p1, CR4, p1, (k1, p1) 10 times, CL4, p1, k6, p2, k6, p1.

Row 23: P1, k6, p2, k6, p1, k3, p1, (k1, p1) 11 times, k3, p1, k6, p2, k6, p1.

Row 25: P1, CB6, p2, CB6, p1, TL4, p1, (k1, p1) 10 times, TR4, p1, CB6, p2, CB6, p1.

Row 27: P1, (k6, p2) twice, TL4, p1, (k1, p1) 9 times, TR4, (p2, k6) twice, p1.

Row 29: P1, k6, p2, k6, p3, TL4, p1, (k1, p1) 8 times, TR4, p3, k6, p2, k6, p1.

Row 31: P1, CB6, p2, CB6, p4, TL4, p1, (k1, p1) 7 times, TR4, p4, CB6, p2, CB6, p1.

Row 33: P1, k6, p2, k6, p5, TL4, p1, (k1, p1) 6 times, TR4, p5, k6, p2, k6, p1.

Row 35: P1, k6, p2, k6, p6, TL4, p1, (k1, p1) 5 times, TR4, p6, k6, p2, k6, p1.

Row 37: P1, CB6, p2, CB6, p7, TL4, p1, (k1, p1) 4 times, TR4, p7, CB6, p2, CB6, p1.

Row 39: P1, k6, p2, k6, p8, TL4, p1, (k1, p1) 3 times, TR4, p8, k6, p2, k6, p1.

Row 41: P1, k6, p2, k6, p9, TL4, p1, (k1, p1) twice, TR4, p9, k6, p2, k6, p1.

Row 43: P1, CB6, p2, CB6, p10, TL4, p1, k1, p1, TR4, p10, CB6, p2, CB6, p1.

Row 45: P1, k6, p2, k6, p11, TL4, p1, TR4, p11, k6, p2, k6, p1.

Row 47: P1, k6, p2, k6, p12, CB7, p12, k6, p2, k6, p1.

Row 48: Rep Row 2.

Rep these 48 rows for Pat St.

BACK

With smaller needles, cast on 109(121-133-147-159-161) sts.

Ribbing: Row 1 (RS): K1, * p1, k1, rep from * across.

Row 2: P1, * k1, p1, rep from * across. Rep these 2 rows until piece measures 2" from beg, end on WS, inc 22(20-16-14-10-20) sts as evenly spaced across as possible - 131(141-149-161-169-181) sts. Change to larger needles.

Establish Pat St: Row 1 (RS): Work Row 1 of Double Seed St over 0(5-9-15-19-25) sts, place marker, work Row 1 of Pat St over 61 sts, place marker, work Row 1 of Double Seed St over 9 sts, place marker, work Row 1 of Pat St over 61 sts, place marker, work Row 1 of Double Seed St to end.

Row 2: Work Row 2 of Double Seed St to first marker, work Row 2 of Pat St to next marker, work Row 2 of Double Seed St to next marker, work Row 2 of Pat St to last marker, work Row 2 of Double Seed St to end. Work even in pat as established until piece measures 14(14-14½-14½-15-15)" from beg, end on WS. Mark beg and end of last row for beg of armholes. Work even until armholes measure 7½(7½-8-8½-9-9½)", end on WS. Bind off.

LEFT FRONT

With smaller needles, cast on 51(57-63-69-77-83) sts. Work in ribbing same as back for 2", end on WS, inc 10(9-7-7-3-3) sts as evenly spaced across last row as possible - 61(66-70-76-80-86) sts. Change to larger needles.

Establish Pat St: Row 1 (RS): Work Row 1 of Double Seed St over 0(5-9-15-19-25) sts, place marker, work Row 1 of Pat St over 61 sts.

Row 2: Work Row 2 of Pat St to marker, work Row 2 of Double Seed St to end. Work even in pat as established until piece measures 14(14-14½-14½-15-15)" from beg, end on WS. Mark end of last row for beg of armhole. Work even until armhole measures 5(5-5½-6-6½-7)", end on RS.

Shape Neck: Next Row (RS): Bind off 16 sts, work to end. Dec 1 st at neck edge every RS row 6 times - 39(44-48-54-58-64) sts. Work even until armhole measures 7½(7½-8-8½-9-9½)", end on WS. Bind off.

RIGHT FRONT

Work same as left front until piece measures 2" from beg, end on WS - 61(66-70-76-80-86) sts.

Establish Pat St: Row 1 (RS): Work Row 1 of Pat St over 61 sts, place marker, work Row 1 of Double Seed St to end.

Row 2: Work Row 2 of Double Seed St to marker, work Row 2 of Pat St to end. complete to correspond to left front, reversing all shaping. When piece measures 14(14-14½-14½-15-15)" from beg, end on WS. Mark beg of last row for beg of armhole. Bind off for neck on RS row. Bind off for shoulder on WS row.

SLEEVES

With smaller needles, cast on 53(53-53-57-57-57) sts. Work in ribbing same as back for 2", end on WS, inc 22 sts as evenly spaced as possible across last row - 75(75-75-79-79-79) sts. Change to larger needles.

Establish Pat St: Row 1 (RS): Work Row 1 of Double Seed St over 7(7-7-9-9-9) sts, place marker, work Row 1 of Pat St over 61 sts, place marker work Row 1 of Double Seed St to end.

Row 2: Work Row 2 of Double Seed St to first marker, work Row 2 of Pat St to last marker, work Row 2 of Double Seed St to end. Inc 1 st each side every 1(1-¾-¾-¾-½)" 15(15-18-18-21-23) times, working inc in Double Seed St as sts become available - 105(105-111-115-121-125) sts. Work even until sleeve measures 18" from beg, end on WS. Bind off.

FINISHING

Sew shoulder seams. Sew on sleeves between markers. Sew side and sleeve seams.

Left Frontband: With RS facing, using smaller needles, beg at neck edge, pick up and k115(115-121-123-129-131) sts along left front edge. Beg with Row 2, work in ribbing same as back for 1¼", end on WS. Bind off in ribbing.

Right Frontband: Beg at lower edge, work same as left frontband for 3 rows, end on WS,

Buttonhole Row (RS): Work 7(7-7-6-6-7) sts, bind off 2 sts, * work until there are 18(18-19-20-21-21) sts on RH needle after bound-off sts, bind off 2 sts, rep from * 4 times more, work to end.

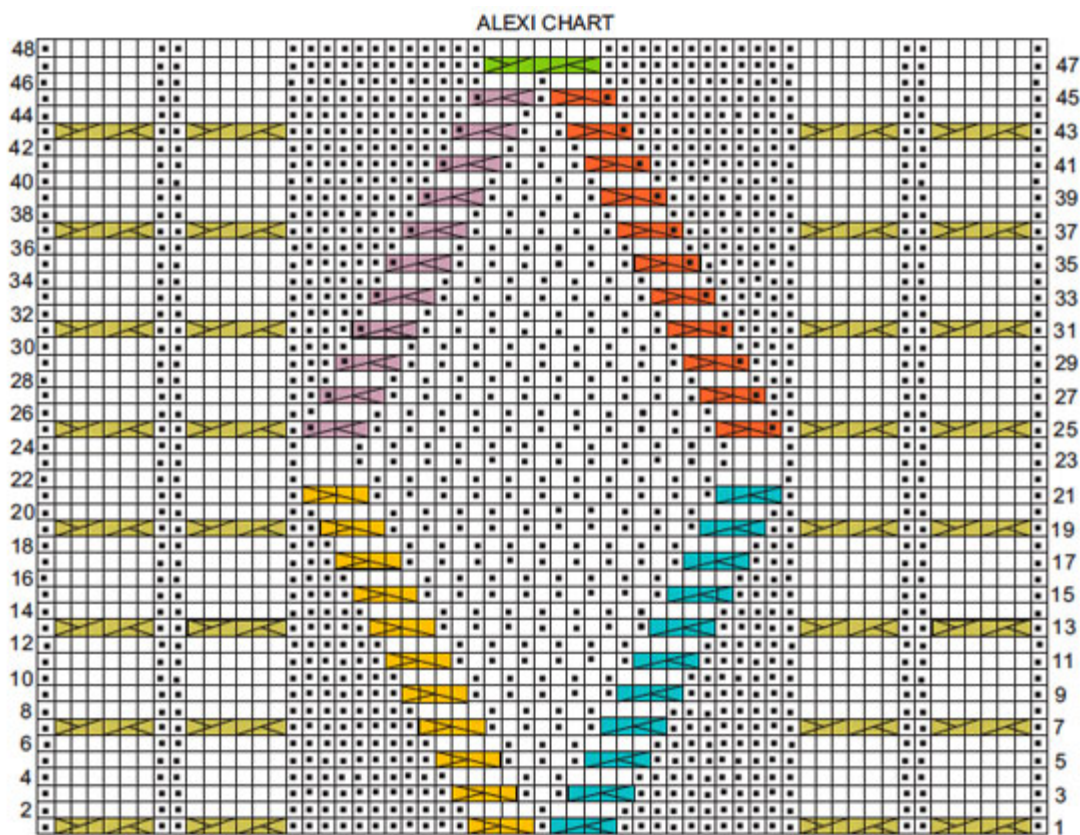
Next Row: Work in ribbing as established, cast on 2 sts over each pair of sts bound off on previous row. Complete same as left frontband.

Collar: Using smaller needles, cast on 99 sts.

Row 1 (RS): Work Row 1 of Double Seed St over 5 sts, place marker, k1, * p1, k1, rep from * to last 5 sts, place marker, work Row 1 of Double Seed St to end.

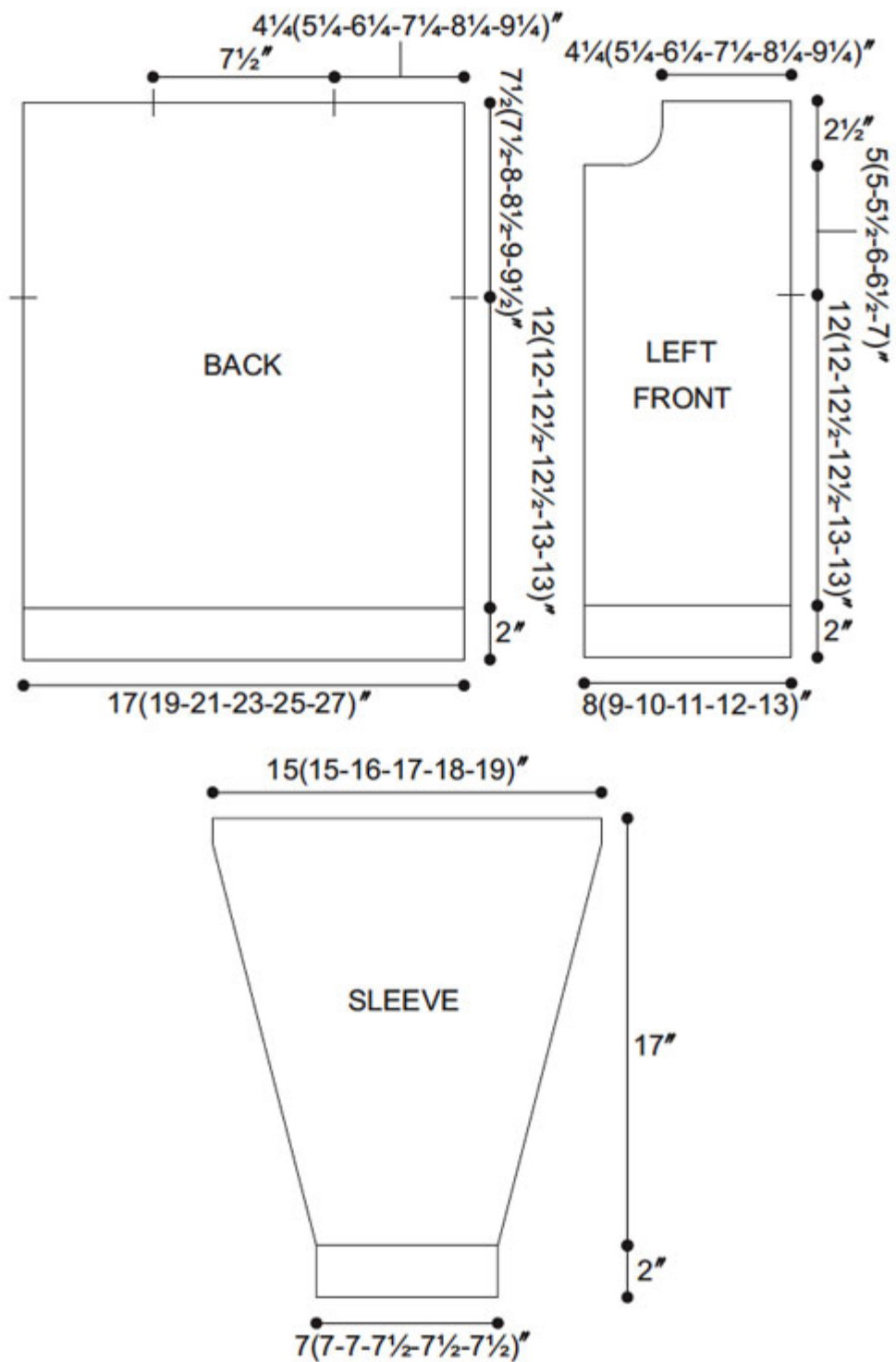
Row 2: Work Row 2 of Double Seed St to first marker p1, * k1, p1, rep from * to last marker, work Row 2 of Double Seed St to end. Work even in pat as established until collar measures 3½" from beg, end on WS.

Dropping markers, work all sts in Double Seed St for 4 rows, end on WS. Bind off loosely in pat st. Sew cast-on edge of collar to neck edge, beginning and ending ½" in from bound-off edge of ribbing on each side. Sew on buttons.



KEY TO CHART

- K on RS, p on WS
- P on RS, k on WS
- ▧ CB6
- ▨ CR4
- ▩ CL4
- TR4
- TL4
- ▬ CB7



WEB EXCLUSIVE

www.berroco.com

[Home](#) | [Yarn Shops](#) | [Yarns](#) | [Free KnitBits®](#) | [New This Season](#) | [Free Patterns](#) | [Blog](#) | [Multimedia](#)
[Pattern Corrections](#) | [Abbreviations & Terms](#) | [Links](#) | [Handeze® Glove](#)
[About Us](#) | [Privacy Statement](#) | [FAQs](#) | [Contact Us](#)

Berroco, Inc. 1 Tupperware Dr. Suite 4, N. Smithfield, RI 02896-6815 USA
copyright 2012 Berroco